

MONTHLY MEMBERSHIP PROGRESS REPORT

LOCATION IOWA

District 9 NE

Results as of: 4/30/2023

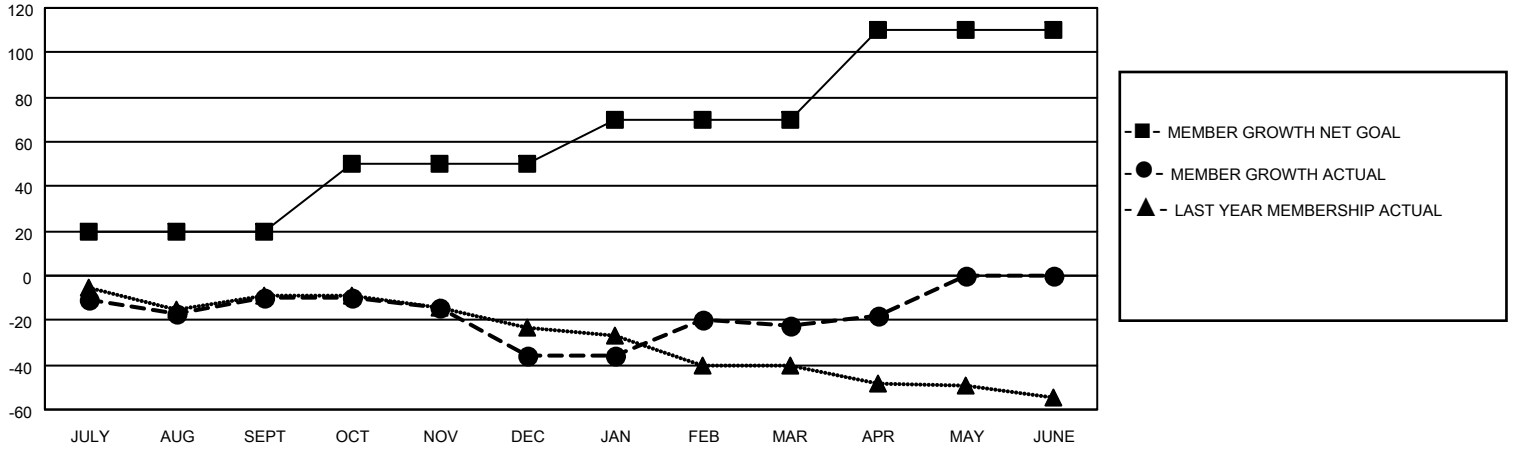
Clubs			
RESULTS FOR 2022-2023			
QUARTER	NEW CLUB GOAL	NEW CLUBS	DROPPED CLUBS
JULY/AUG/SEPT	1	0	0
OCT/NOV/DEC	1	0	0
JAN/FEB/MAR	1	0	0
APR/MAY/JUNE	1	0	0

Members			
RESULTS FOR 2022-2023			
QUARTER	MEMBER GROWTH NET GOAL	MEMBER GROWTH ACTUAL	DROPPED MEMBERS ACTUAL (including transfers)
JULY/AUG/SEPT	20	20	29
OCT/NOV/DEC	30	13	38
JAN/FEB/MAR	20	35	21
APR/MAY/JUNE	40	13	8

GOALS AND ACTUAL NEW CLUBS CUMULATIVE



GOALS AND ACTUAL MEMBERS CUMULATIVE



DROPPED CLUBS: 0

23 CLUBS OF 42 ADDED 1 OR MORE NEW MEMBERS

GENDER DISTRIBUTION

MALE	883 (75.86%)
FEMALE	281 (24.14%)
NON BINARY	0 (0.00%)
PREFER NOT TO ANSWER	0 (0.00%)

DROPPED MEMBERS

[CLICK HERE FOR CUMULATIVE MEMBERSHIP DATA](#)

DECEASED	12
CLUB CANCELLED	0
OTHER	84
TOTAL	96

TOTAL FAMILY UNIT MEMBERS	166
FAMILY MEMBERS PAYING HALF DUES	83